

Design: STX AH 08
Built: 2010
IMO No: 9447627

Skandi Peregrino



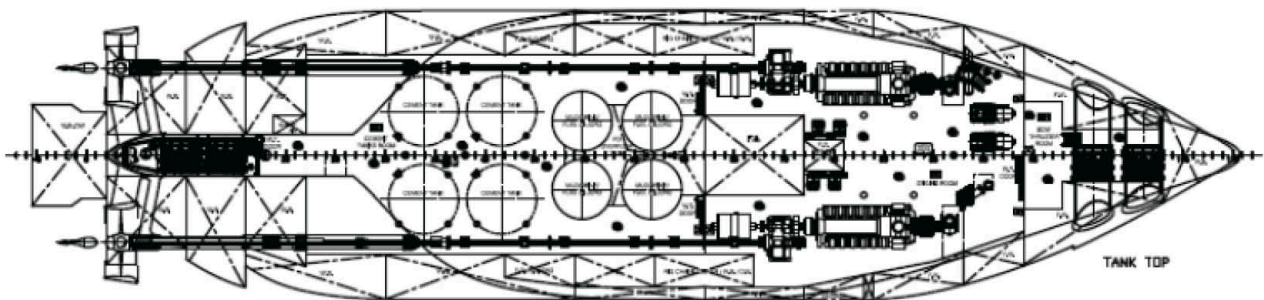
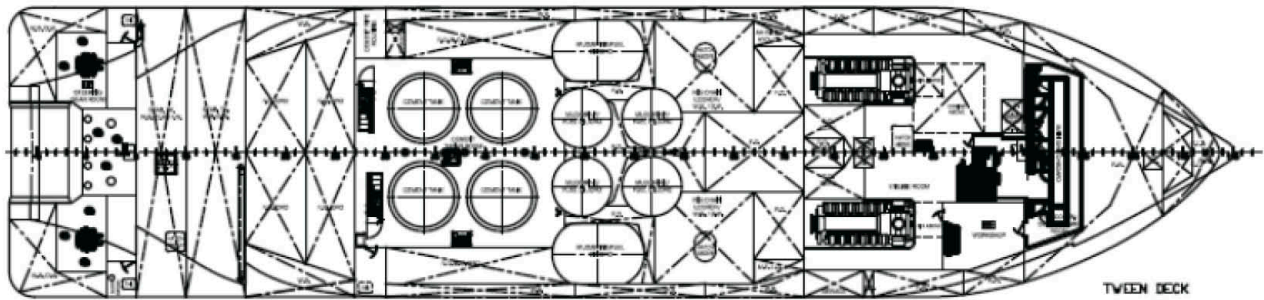
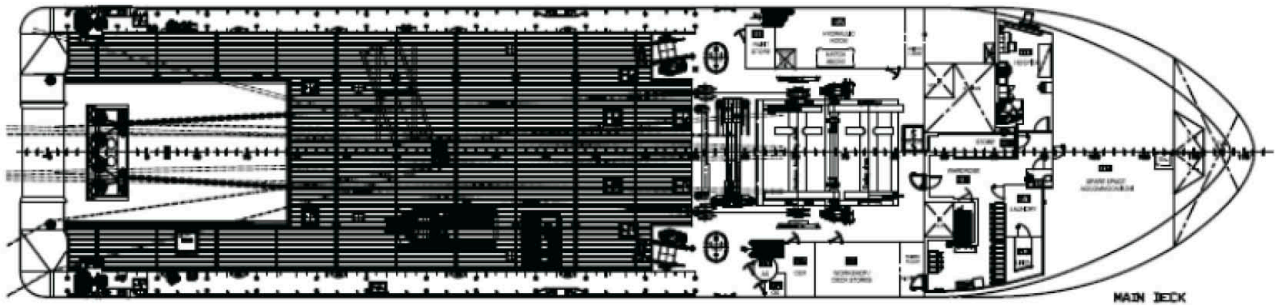
A part of the DDW Offshore Fleet

www.ddwoffshore.com

Skandi Peregrino

IMO No 9447627

DDW
OFFSHORE



SKANDI PEREGRINO

VESSEL MAIN PARTICULARS

Vessel name	Skandi Peregrino
Manager (DOC holder)	DDW Offshore AS
Owner	DDW Offshore AS
Type	AHTS
Vessel design	Aker AH08
Class definition	DNV 1A1, SF, TUG, E0, DYNPOS-AUTR (IMO DP II), CLEAN DESIGN, NAUT OSV, FIRE FIGHTER I, T-MON, DK (+), HL(2.8), OILREC Comf-V3
Vessel built	2010
Yard	Vard Vung Tau
Yard no	AYV002
Port of registry	Bergen
Flag state	Norway (NIS)
Safe Manning	9
Next dry docking	NOV 2020

PRINCIPAL DIMENSIONS

LOA	75,09 m
LPP	69,7 m
Breadth mld	17.4 m
Depth mld to main deck	8.5 m
Min Draft	5.5 m
Summer draft	7 m
Airdraft	35.7 m
Deadweight	3195t
Lightship	3408.6 t
Gross tonnage	3181 t

Net tonnage	1129 t
-------------	--------

PERFORMANCE

Max speed	15 knots
BHP	16000 BHP/ 12000 kW
Bollard Pull Continuous	186 t
Bollard pull max	186 t

PROPULSION / MAIN ENGINES

Main engines (make)	Rolls-Royce B32:40 V12 - 6000 kW
Number of main engines	2
Total output main engines (kW)	12 000
Main propellers	2 Scana Volda Hub 105, 4 blades
Propellers diameter	4,00 m
Generators	2
Drive type shaft/diesel-electric	Shaft
Fuel type MGO/HFO	MGO

THRUSTERS / PROPELLERS

Azimuth thruster	1 x Rolls Royce TCNS073/50-180, Swing Up 880 kW
------------------	--

Bow thruster	1 x Brunvoll CPP FU-80-LTC- 2000 - 880 kW
Stern thrusters	1 x Brunvoll CPP- FU-80-LTC- 2000 - 880 kW

GENERATORS / AUX GENERATORS

Shaft generators make:	2 x AEM SE 630 L6, 3000kVA 2,2MW
Shaft generators capacity:	2400 kW / 3000kVA
Aux generators Make:	1 x Nogva (Scania) 370 ekW - 440V 1 x Cummins 950 kW
Aux generators capacity:	1x 950 Kw 1x 370 Kw
EM generator make:	1 x Nogva Deere 6068TFMSC,
EM generator capacity:	99 kW

CARGO DECK

Deck space	550 m ²
Deck length	38m
Deck breadth	14 m
Deck strength	10 t/m ²
Deck cargo capacity (tonnes)	700 t
Height of cargo rail	2.7 m
Work crane	Yes

CARGO CAPACITY SUMMARY

Fuel oil	1700 m ³
Base oil	230 m ³
Fresh water	810 m ³
Drill water	1970 m ³
Liquid Mud	460 m ³
Brine	460 m ³
Bulk Cement	260 m ³
Bulk Barite	260 m ³
Bulk Bentonite	230 m ³

Oil recovery	1070 m ³ 12 combination tanks
Rig chain lockers	300 m ³
Slop	21m ³
Combination tank system	Partly combined tanks for Mud/Brine/FO. combined for Base oil/FO

DRILL WATER

Tank capacity	1970 (incl. comb tanks)
Number of tanks	22
Pump capacities	200/120 m ³ /h
Pump type screw/centrifugal	centrifugal/air ejector/hyd drive
Number of pumps	1

FW

Tank capacity	810 m ³
Number of tanks	9
Pump capacity	200m ³ /h
Pump type screw/centrifugal	Centrifugal
Number of pumps	1

FUEL OIL

Tank capacity	1700 (incl.comb tanks)
Number of tanks	23
Pump capacity	200 m ³ /h
Number of pumps	1
Flowmeter	yes
Pump type screw/centrifugal	Centrifugal

LIQUID MUD

Tank capacity	460m ³
Number of tanks	6

Pump capacity	75 m ³ /h
Pump type screw/centrifugal	Screw
Number of pumps	2
Fixed tank cleaning system	Yes
Agitator or circulation	one agitator each tank
Possible to handle two types of mud simultaneously	Yes
Max SG	2.8 t/m ³

DRY BULK

Tank capacity	264 m ³
Number of tanks	4
Compressor capacity	25.9 m ³ /min - 5.6 bar
Air dryer	Yes

BASE OIL

Tank capacity	230 m ³
Number of tanks	2
Pump capacity	150 m ³ /h
Pump type screw/centrifugal	2 spindle screw pump/el.drive/2 speed/heater 220 V
Number of pumps	1
Possible to handle two types of base oil simultaneously	Yes

BRINE

Tank capacity	460 combination tanks
Number of tanks	6
Pump capacity	75 m ³ /h
Pump type screw/centrifugal	Eccentric screw pump - self priming/hydr.drive/heater 220 V
Number of pumps	2
Fixed tank cleaning system	yes

Possible to handle two types of brine simultaneously Yes

CARGO LOADING / DISCHARGING CONNECTIONS

Fuel oil	TODO 4"
Fresh water	Camlock 4"
Liquid mud	Weco 4"
Brine	Weco 4"
Drill water	Camlock 4"
Drybulk	Camlock 5"
Base oil	TODO 4"

POWER SUPPLY DECK

Air outlets	8
Air outlet capacity	2x5m ³ /min
ROV power outlets	2
ROV power outlet capacity	2 x 630 AMPS
Reefer outlets	6
Reefer outlet capacity	6 x 16 AMPS
Utility power outlets	1 x 440 V
Power outlet capacity	200 AMPS

ROLL REDUCTION SYSTEM

Number of roll reduction tanks	2
Roll reduction system type	Tanks

EVAPORATOR / OSMOSIS

Reverse osmosis type	Hrso Hansun Marine
Reverse osmosis capacity	10 m ³ /day

DECK CRANES

Starboard crane	1 x Triplex Provision Crane - Rescue rated 5 T @ 10 m / 3 T @ 16 m
Cargo rail crane	TRIPLEX K-50/3,0/150/27
Crane TBN	1 x Triplex Cargo Rail Crane 3 T @ 12 m
SWL	3 T
SWL	3T
Wire type	non-rotating
Wire type	non-rotating
Wire Length:	50m
Wire Length:	50m

ANCHOR HANDLING WINCH

Type	RR SL 350W/BSL350W
Length of drum	3450 mm
Inner drum diameter	1050 mm
Diameter of flanges	2850 mm
Low gear: Drive hoist first layer	350T 10,5M/MIN
Low gear: Drive hoist first layer	350T 10,5M/MIN
Low gear: Drive hoist top layer	144T 25M/MIN
Low gear: Lowering first layer	0-34M/MIN
Low gear: Lowering top layer	0-84 M/MIN
Low gear: Dynamic braking first layer	144T 25M/MIN
High gear: Drive hoist first layer	350T 10,5M/MIN
High gear: Drive hoist top layer	144T 25M/MIN
High gear: Lowering first layer	0-34M/MIN
High gear: Lowering top layer	0-84 M/MIN
High gear: Dynamic braking first layer	64-480T 0-51M/MIN
High gear: Dynamic braking top layer	26-196T 0-126M/MIN
Brake holding first layer	450 T

TOW / WORK WINCH

Type	RR SL 350W/BSL350W
Length of drum	3450 mm
Inner drum diameter	1050 mm
Diameter of flanges	2850 mm
Low gear: Drive hoist first layer	350T 10,5M/MIN
Low gear: Drive hoist top layer	144T 25M/MIN
Low gear: Lowering first layer	0-34M/MIN
Low gear: Lowering top layer	0-84 M/MIN
Low gear: Dynamic braking first layer	64-480T 0-51M/MIN
Low gear: Dynamic braking top layer	26-196T 0-126M/MIN
High gear: Drive hoist first layer	350T 10,5M/MIN
High gear: Drive hoist top layer	144T 25M/MIN
High gear: Lowering first layer	0-34M/MIN
High gear: Lowering top layer	0-84 M/MIN
High gear: Dynamic braking first layer	64-480T 0-51M/MIN
High gear: Dynamic braking top layer	26-196T 0-126M/MIN
Brake holding first layer	450T
Tow-Wire Lenght	1070m/1500m
Tow-Wire Diameter	83mm
Tow-Wire Strenght	WLL 98T

TOW / WORK WINCH PORT SIDE

Type	LAKM 132024
Lenght of drum	1000 MM
Diameter of flanges	2300 MM
Inner drum diameter	Drum ø900/2300 x 1000mm

TOW / WORK WINCH STARBOARD SIDE

Type	LAKM 132024
Lenght of drum	1000 MM
Diameter of flanges	2300 MM

Inner drum diameter	Drum ø900/2300 x 1000mm
---------------------	-------------------------

SECONDARY WINCHES

Type	RR ALM63130
Length of drum	2300 MM X2 + 750 MM X2
Inner drum diameter	1500 mm
Diameter of flanges	4500 mm
Drive hoist first layer	130 t - 18 m/min
Drive hoist top layer	53 T 0-45 M/MIN
Capacity wire	2 x 800m d 203mm wire

ANCHOR HANDLING EQUIPMENT

Smith bracket MBL	300 t
Tuggerwinches	4
Shark jaws	2
Spare shark jaw inserts	8
Towing pins	4
Steering pins	2
Stern roller dim	3500 mm
Water monitors	2
J-hook	1
Grapnel	1
Swivel numbers of.	1
Swivel SWL	800 MT
Pearlink no7	10
55 t shackles	8
85 T shackles	5
120 T shackles	4
250 T shackles	250
Kenterlink 84mm	1
Chain Tale 78mm	1

WIRE STATUS

AH drum	83 mm x 1500 m
Tow drum	1070m x 83mm BROKEN
Sec drum Starboard	(suitcase), 100mx64mm, 150mx76mm
Sec drum port	(suitcase), 2x 2 3/4" x 60m
stb. Tow drum	76mm x 150m
Port Tow Drum	76mm x 150m

GYPSYS INSTALLED

Gypsy starboard side	90
Gypsy port side	84
Spare Gypsy`s	90

DECK MACHINERY

Tugger wich type	LAKMX22012
Tugger wich capacity	ø324/800 x 750mm
Tugger wich hoisting speed	12t 17m/min
Capstan type	
Capstan capacity	
Capstan hoisting speed	

WINDLASS

Type	1 x Rolls Royce BFM 63044MA
Cable lifter hoisting speed/pull	0 - 13 m/min - 10 t
Anchor type	2 x Stockless Bow Anchor 3.1 t
Chain length	2 x 495 m/44 mm
Mooring drum capacity/pull	14 t - 12 m/min 3 t - 37 m/min

RIG CHAIN LOCKERS

Chain lockers numbers & m ³	2 x 150 m ³
--	------------------------

Capacity 76 mm chain	1900 m
Capacity 84 mm chain	1550 m
Capacity 110 mm chain	750 M
Capacity 90mm chain	900 M

NAVIGATION EQUIPMENT

X-band Radar	Sperry Marine Visonmaster 65608 A
S band Radar	Sperry Marine Visonmaster 65612 A
Electronic chart system	Sperry Marine Visonmaster FT
Autopilot	Sperry Marine Navipilot 4000
GPS	SAAB R4 Navigational System
Navigation DGPS	Sperry Marine Dual DGPS SAAB R4
Echosounder	Sperry Marine 2863- AA
Magnetic Compass	Sperry Marine Navipol II Magnetic Jupitert 4105
Gyro compass	Sperry Marine 4881-AB
Wind gauge	Kongsberg wind observer II Ultrasonic
Speed Log	Sperry Marine - Naviknot 350E
AIS	Sperry Marine R4 - AIS Shipborne Class A
VDR Voyage Data Recorder	Sperry Marine Voyagemaster II VDR 1301063C4
LRIT	Sperry Marine Sailor TT3606E

COMMUNICATION EQUIPMENT

VHF RDF	Taiyo TD - L1550A
MF/HF	Sperry Marine Sailor CU5100 MF/HF control unit
MF/HF DSC	Sperry Marine Sailor CU5100 MF/HF control unit
VHF	Sperry Marine Sailor 6210 VHF
VHF DSC	Sperry Marine Sailor RT5022
Navtex	MC Murdo Nav-7
EPIRB	MC Murdo Sailor SGE406-II with autohousing

EPIRB 2	MC Murdo Sailor SGE406-II with autohousing
SART	MC Murdo Sailor SART-II with pole
SART	MC Murdo Sailor SART-II with pole
Mobilephone	2
Inmarsat C	Sperry Marine Sailor TT3606E
Portable VHF	Sperry Marine Sailor SP3530 VHF
Portable UHF	Motorola PRO5150
Weather fax	Fax - 30 Furuno
Inmarsat FleetBroadband	Sperry Marine Sailor Inmarsat Fleet TT3622B
Helicopter radio	VHF Air Band Transceiver - Icom
Helicopter radio	Icon Helicom
Helicopter Beacon	Navtel 500
DOF V - SAT 2	Stentofon V-Sat Telephone
Stationary UHF	Motorola GM-338 BS UHF

DYNAMIC POSITIONING SYSTEM

Class definition	DNV AUTR, Imo Class 2
Type	Kongsberg Simrad Kpos DP21
DGPS no1	Kongsberg Seatex DPS116
DGPS no2	Kongsberg DPS112
Diff correction	IALA/INMARSAT/SPOTBEAM
Hipap/HPR	No - But have HIPAP tunnell
Fanbeam	MDL Fanbeam
Cyscan	No
Tautwire	No
Transponders	Kongsberg Radius 700 Transponder
Radius	Kongsberg Radius 1000
Wind Sensor no1	Gill Instruments Ltd. WindObserver II
UPS	UPS 9120GB 3kVA HV
Motion Reference Units	Kongsberg MRU D
Consequence Analysis	Yes, DP2

JOYSTICK

Type	Kongsberg C-Joy operator terminal
Connections points	3

ACCOMMODATION

Total number of bunks	27
Crew double Cabins	10
Messroom/Rec rooms	2
Gymnasium	Yes
Hospital	Yes
Offices	2
Conference rooms	2
Officers Cabins	8
Crew single Cabins	7

GALLEY

Freezer space(m ³)	2 x 6.5 m ³
Cooler space (m ³)	14 m ³

LIFE SAVING EQUIPMENT

MOB boat	Alusafe 770 Twin FRB
Liferafts	6 for 15 people each
Daughtercraft	Marine Partner MP-1111 TWJ FRDC
Work boat	Marine Partner MP-1111 TWJ FRDC
Lifejackets	36 x Viking PV9500A
Survival suits	34 x Viking PS2004
Immersion suits	34 x Viking PS2004
Harpoon Cannon Type	Restech Norway PLT R-230
Harpoon	Restech Norway 0575

FIFI / DISPERSANT SYSTEM

Type	MM602 HJF-F-C-01
Fire Fighting class	Hull AYW1-6 DNV Fi-Fi 1
FIFI Capacity	1650 cbm/h
Throw height / length	Height: 50 m; Lenght: 120m
Monitor count	2
Monitors capacity	1200 cbm/h
Operation Elevation	Elevation: -30 degrees / +70 degrees max
Operation Rotation	330 degrees maximum
Foam system type	MM602 HJF-F-V-C-01
Foam system Capacity	300 cbm/h
Dispersant system	Tank, transfer pump, dispersant pump, 2xbooms,
Dispersant booms length	8510mm
Dispersant capacity tank & litre/min	44,8m ³ & 60L/min (3,8m ³ /hr)
Water Spray	800 cbm/h

STANDBY / RESCUE CERTIFICATE

Certificate	09.11.2020
Number of survivors	120
Searchlights	3
Scoop net	Scramble net 4pc and Rescue Basket 8 person,800kg
Line throwing device	18.10.2016

STANDBY / RESCUE EQUIPMENT

FRC Type	Alusafe 770 Twin FRB
FRC Engines	Twin Volvo D3-190
FRC WaterJet	Vosper PP90 Impeller
FRC Capacity	10 people
FRC Weight	2550 Kg

SWL Lifting Arrangement	5000 Kg
Davit	TESS HL90P-A
SWL Davit	3,5 T

MISCELLANEOUS

Voyage Data Recorder VDR	Sperry Marine Voyagemaster II VDR 1301063C4
--------------------------	--

INCINERATOR

Incinerator type	Hansun 180,000 kcal/h (208KW) 20 kg/h IMO sludge oil
------------------	---



DDW Offshore AS

Oksenøyveien 10
1366 Lysaker
NORWAY

+47 21 52 58 00